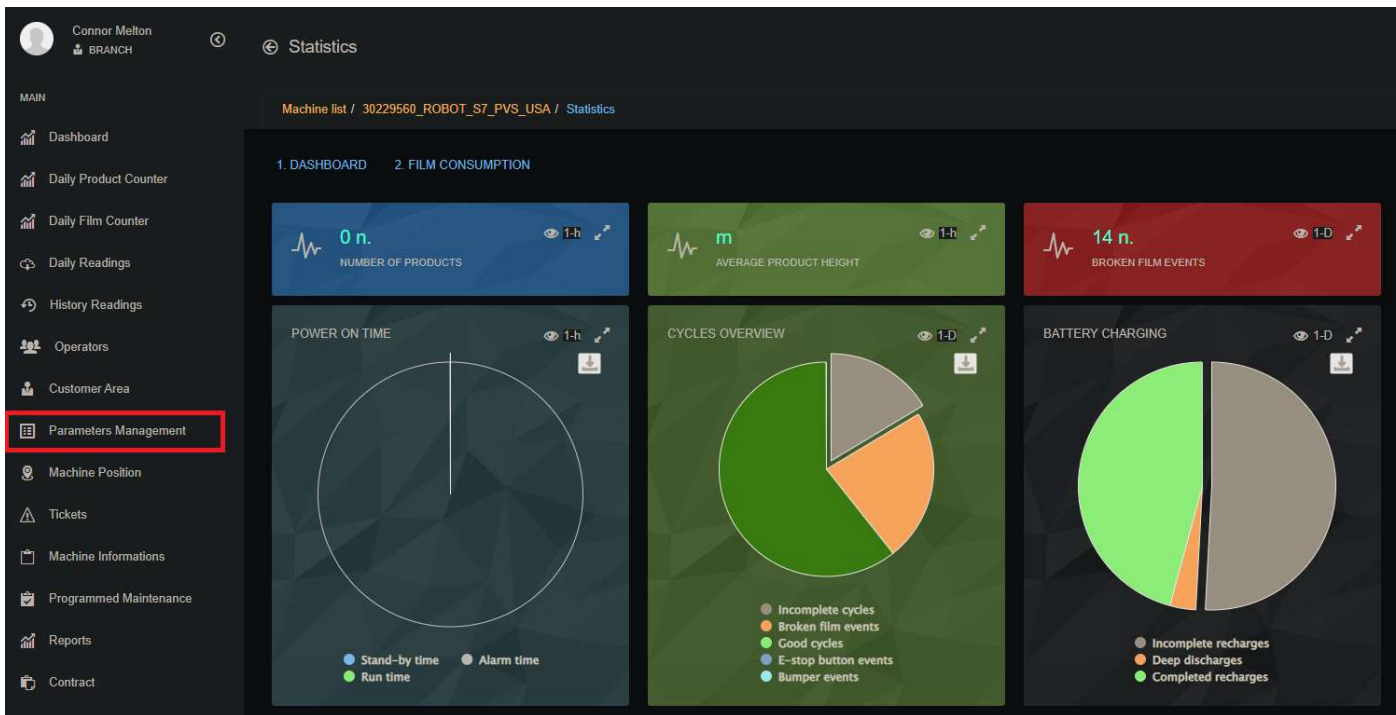
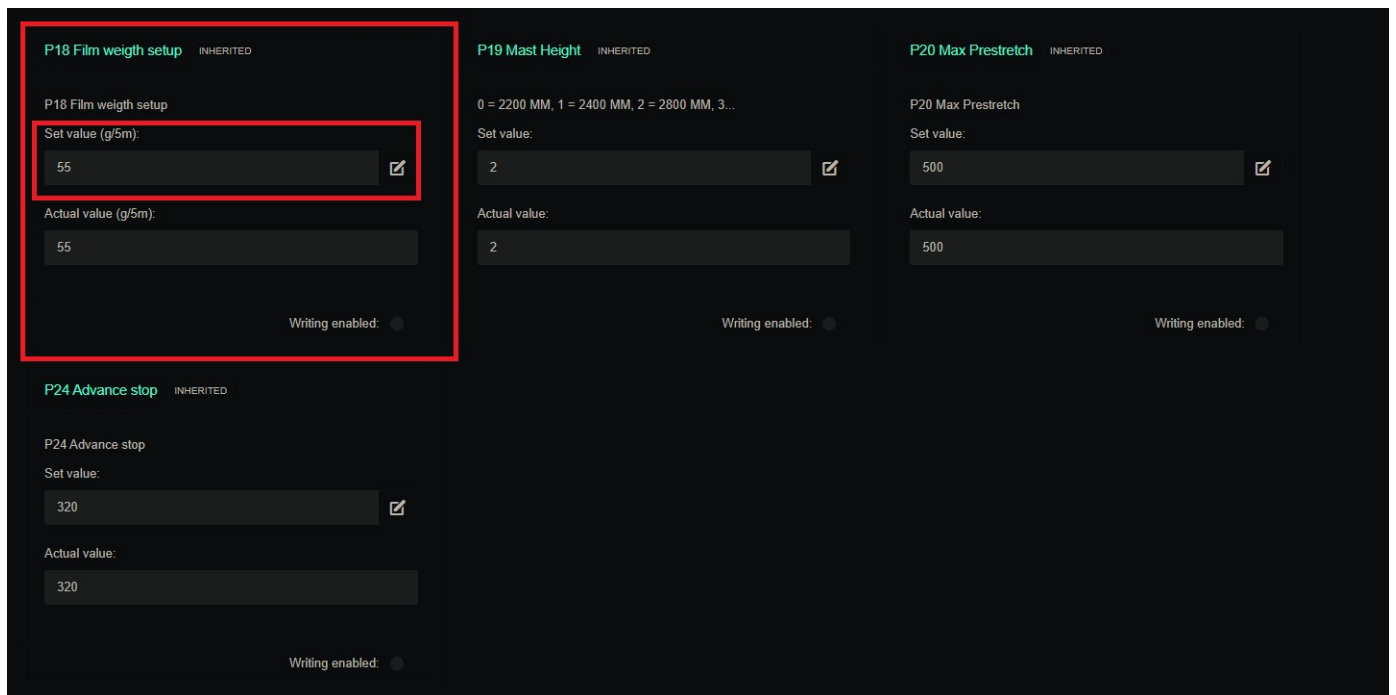


1. Navigate to “Machine List” under your profile picture in the portal home screen. Find your machine in the list that pulls up, or search the serial number of the machine in the search box. Select the machine being configured.



2. Select “Parameters Management” from the side menu and select the option “016 – MACHINE PARAMETERS – Page 1” from the parameter list.



3. Go to the setting named “Film Weight Setup” towards the bottom of this page. The top value is “oz/16ft” which is the weight as a unit of length. To find out what this value should be, just break off 16ft of film and take the weight in ounces. Once you have this value, just input the number into the “Set Value” field. If you cannot edit, make sure the “Writing enabled” option below the “Actual value” box is switched to ON.
4. At the top of the page on the right side, click “Save” and then “Send” to save the value change and upload it to the machine remotely.
5. This completes the process...please keep in mind that if the film is changed to another brand or gauge, this process will need to be repeated with the new film to assure accurate results.